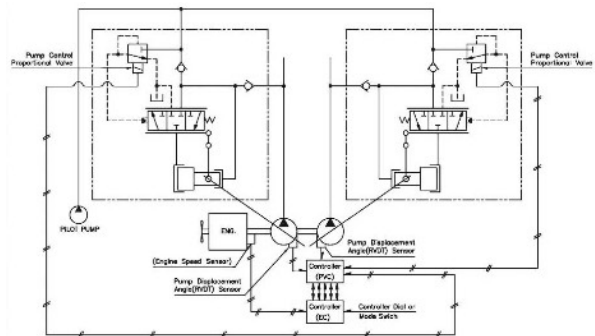
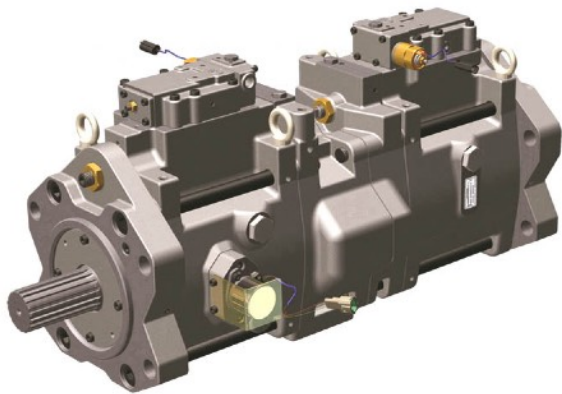


Axialkolben-Doppelpumpe

Serie H3V DTH für Typ EN00-Normal und Hitachi



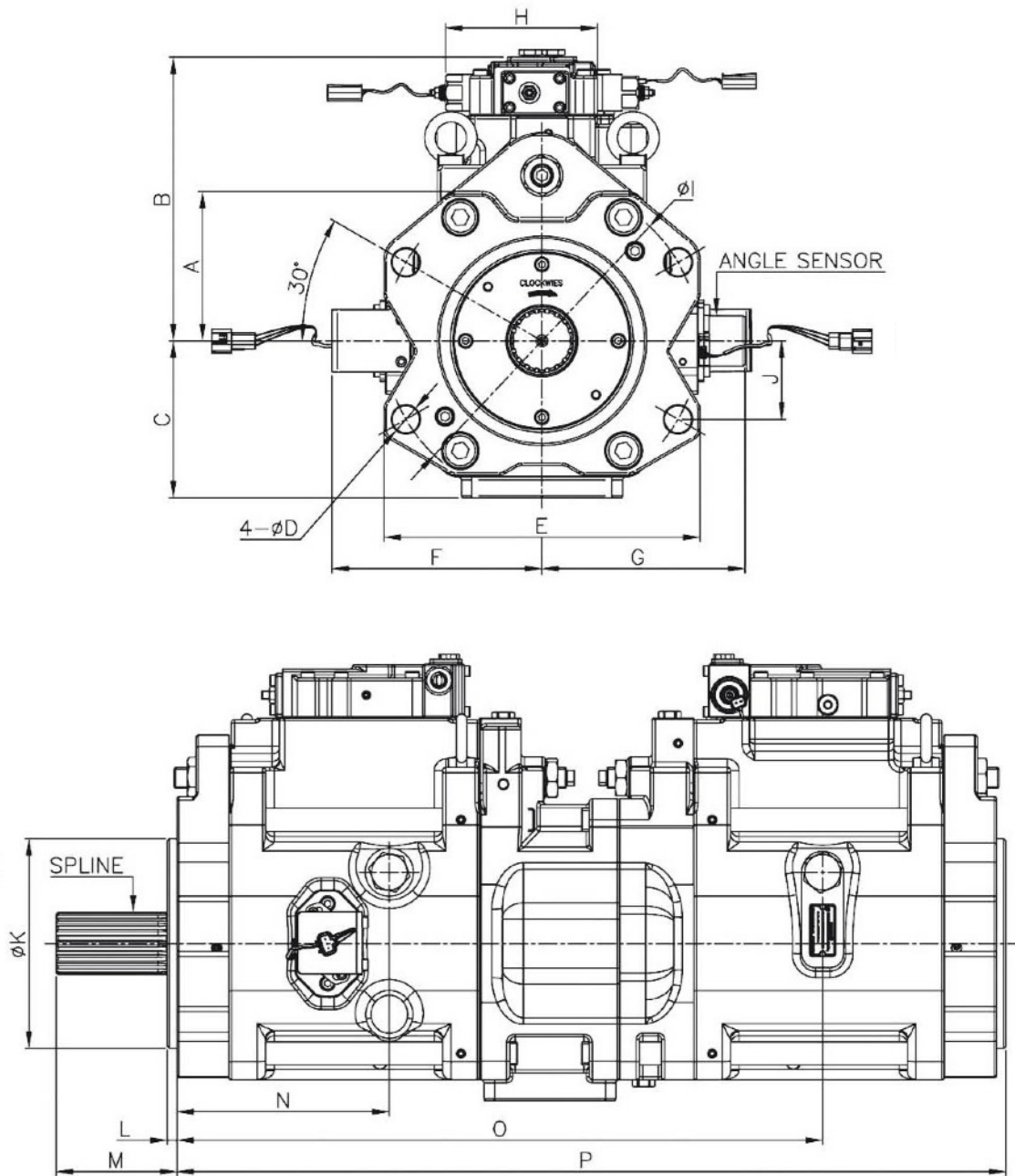
Spezifikationen

Model	Fördermenge (cm ³ /U)	Max. Druck (bar)	Max. Drehzahl (U/min)
H3V180DTH/H5V200DTH	180/200	350	2150
H3V280DTH	280		1900

Masse Wellenende

Model	Anzahl Zähne	∅ Aussen (mm)	Modul	Eingriffswinkel	Standard
H3V180DTH (EX400/450)	17	42.5	2.5	20°	JIS B 1603:1995
H3V280DTH (EX750/800)	18	54	3		

Masse (mm)



Model	A	B	C	D	E	F	G	H	I	J	K	L	M	N	O	P
H3V180DTH (EX400/450)	127	231	135	22	258	176	231	145.2	250	62.5	180	8	93	190	420	610
H3V280DTH (EX750/800)	143	271	150	26	302	201	194		300	75	200	9	115	203	617	748