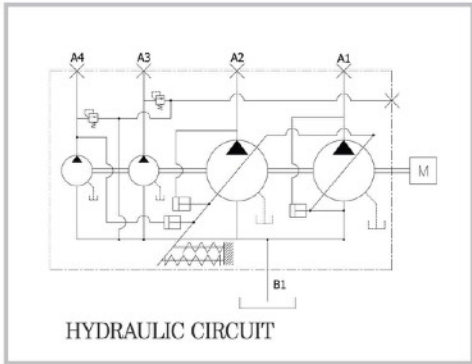
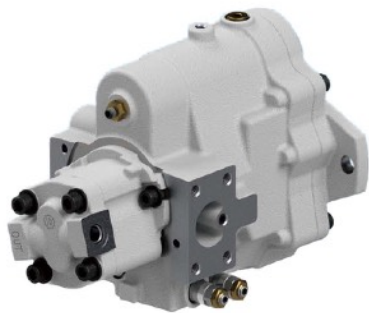


Axialkolbenpumpe HSVD2-17/21/27E

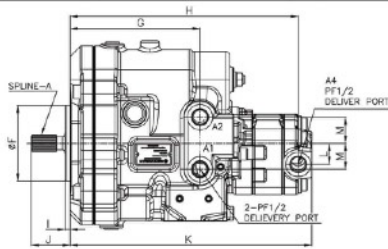
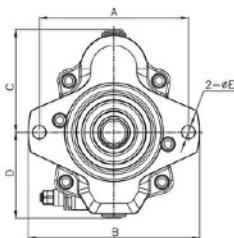
Austausch für Kayaba PSVD2-17/21/27E

Model	HSVD2-17E	HSVD2-21E	HSVD2-27E
Artikel-Nummer	103227	103228	101789
Verdrängungsvolumen (cm ³ /U)	17	21	27
max. Druck (kg/cm ²)	250		
max. Umdrehung (rpm)	2500	2400	

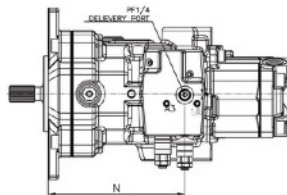
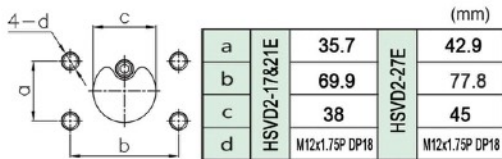


Dimensions of Shaft End (Spline Type)

MODEL	No. of teeth	Pitch circle Dia(mm)	Module	Pressure Angle	Standard
HSVD2-17E	13	20.6375	13	30°	SAE J744
HSVD2-21E					
HSVD2-27E					



Flange Mounting face for Suction Port

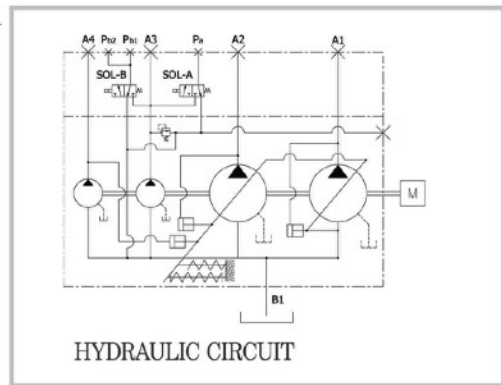


DIMENSIONS

MODEL	A	B	C	D	E	F	G	H	I	J	K	L	M
HSVD2-17E	146	180	120	105	14	101.6	145	255	7	46	279	28	154
HSVD2-21E		192	121	108			45	300		163.5			
HSVD2-27E	200	230	135.5	115.5	17.5		174	306		47	324	35	183

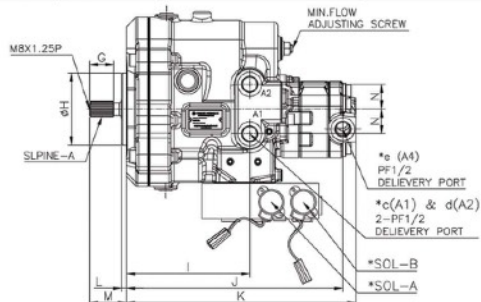
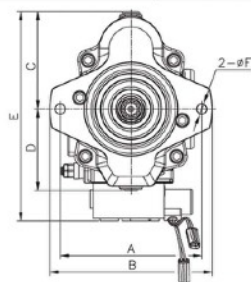
Komplett mit Magnetventil

Model	HSVD2-17E	HSVD2-21E	HSVD2-27E
Artikel-Nummer	103229	103230	103231
Verdrängungsvolumen (cm ³ /U)	17	21	27
max. Druck (kg/cm ²)	250		
max. Umdrehung (rpm)	2500	2400	

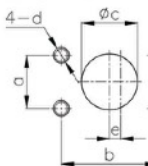


Dimensions of Shaft End (Spline Type)

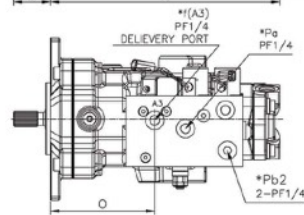
MODEL	No. of teeth	Pitch circle Dia(mm)	Module	Pressure Angle	Standard
HSVD2-17E	13	20.6375	13	30°	SAE J744
HSVD2-21E					
HSVD2-27E					



Flange Mounting face for Suction Port



	a	b	c	d	e
HSVD2-17&21E	35.7	69.9	38	M12x1.75P DP18	9 / 12
	42.9	77.8	45	M12x1.75P DP18	14
HSVD2-27E					



DIMENSIONS

MODEL	A	B	C	D	E	F	G	H	I	J	K	L	M	N	O
HSVD2-17E	146	180	120	105	260	14	30	101.6	145	255	279	7	46	28	154
HSVD2-21E		192	121	108	264				161	276	300		55		163.5
HSVD2-27E	200	230	135.5	115.5	293	17.5			174	306	324		52	35	183