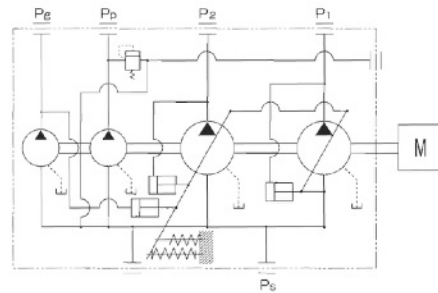
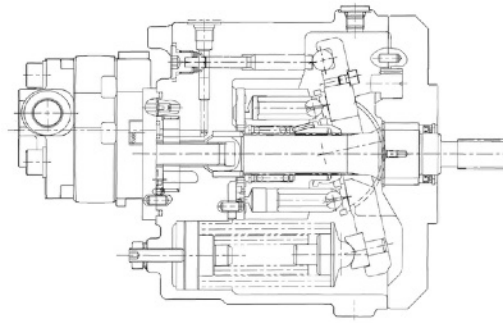
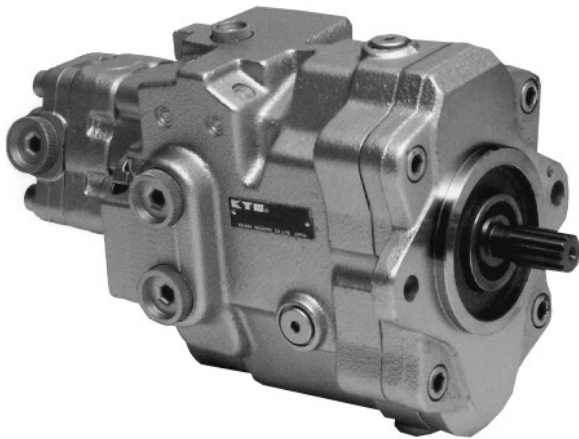


Kolbenpumpen

PSVD-Serie

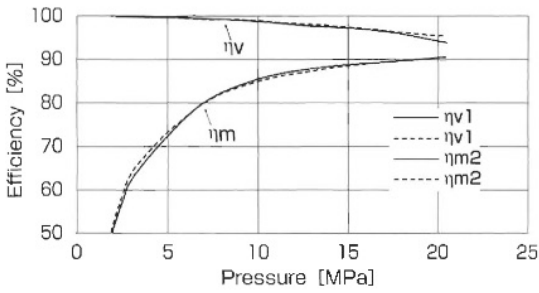


Technische Daten

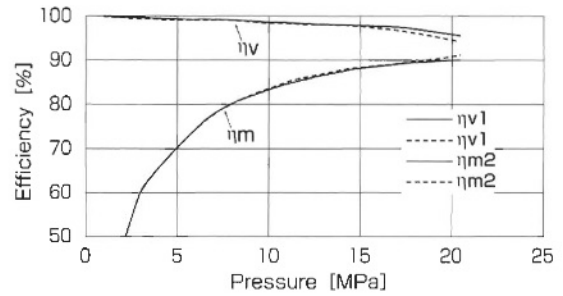
		PSVD2-12E	PSVD2-16E	PSVD2-21E	PSVD2-27E
Max. Pumpendrehzahl	U/min	2550	2500	2400	2400
Drehrichtung		im Uhrzeigersinn			
Saugdruck	bar	-0.3~+0.3			
Temperatur Flüssigkeit	°C	-10~+80			
Viskosität Flüssigkeit	m ² /s	-0.001~+0.1			
Baggertyp	to	2.0~3.0	2.5~3.5	3.5~4.5	4.5~6.0
Hauptpumpe					
max. Fördermenge	cm ³ /U	10.2~13.1	14.2~16.8	17.9~20.8	22.4~27.9
max. Druck	bar	250			
max. Drehmoment	Nm	59.8	85.3	122.6	140.2
Vorsteuerpumpe					
Fördermenge	cm ³ /U	3.5/4.9			
max. Druck	bar	50			
Zahnradpumpe					
Fördermenge	cm ³ /U	7.0/9.4/11.9/14.3/16.8/19.2			
max. Druck	bar	201			

Leistungskurven

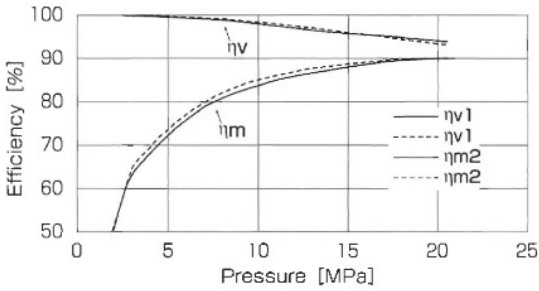
PSVD2-12E



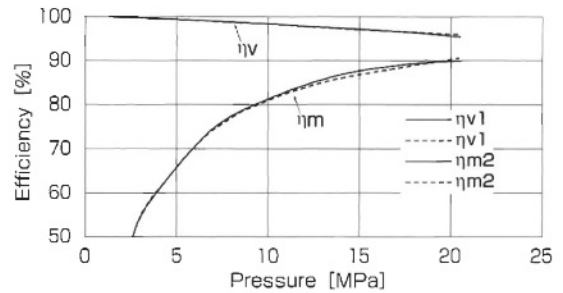
PSVD2-21E



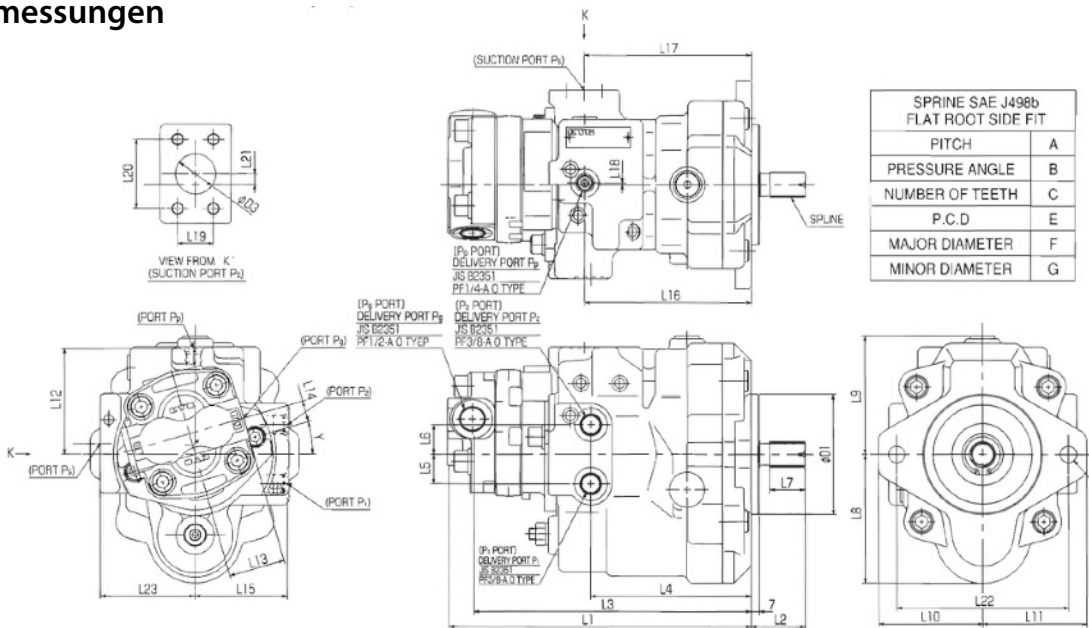
PSVD2-16E



PSVD2-27E



Abmessungen



Modell	L1	L2	L3	L4	L5	L6	L7	L8	L9	L10	L11	L12	L13	L14	L15	L16	L17	L18	L19	L20	L21	L23
PSVD2-12E	259	46	235.5	136.5	25	25	30	111	100.5	90.5	90.5	89.5	48	18	78.5	142	142.5	1.5	30.2	58.7	9	80
PSVD2-16E	279	46	255.5	144.5	28	28	30	120.5	104.5	90.5	90.5	91.5	48	18	78.5	154	154.5	1.5	35.7	69.9	9	80
PSVD2-21E	299.5	45	276	161	28	28	25	120.5	107.5	90.5	90.5	94.5	48	18	76	163.5	173	1.5	35.7	69.9	12	82
PSVD2-27E	324	47	301	174	35	35	30	136	115.5	177	117	104.5	48	18	88.5	183	187.5	1.5	42.9	77.8	14	91

Modell	A	B	C	∅E	∅F	∅G	M	∅N	Y	P ₁ Port	P ₂ Port	P _x Port	P _p Port	∅D1	L22	∅D3
PSVD2-12E	16/32	30°	13	20.638	21.679~21.806	18.352~18.631	M10	14	16°	PF3/8	PF3/8	PF1/2	PF1/4	101.6	146	34
PSVD2-16E	16/32	30°	13	20.638	21.679~21.806	18.352~18.631	M12	14	16°	PF1/2	PF1/2	PF1/2	PF1/4	101.6	146	38
PSVD2-21E	16/32	30°	17	26.988	28.029~28.156	24.702~24.981	M12	14	16°	PF1/2	PF1/2	PF1/2	PF1/4	101.6	146	38
PSVD2-27E	16/32	30°	17	26.988	28.029~28.156	24.702~24.981	M12	17.5	16°	PF1/2	PF1/2	PF1/2	PF1/4	101.6	200	45