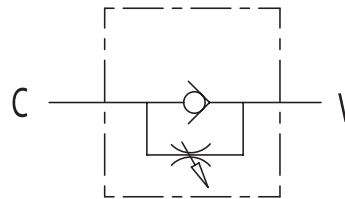


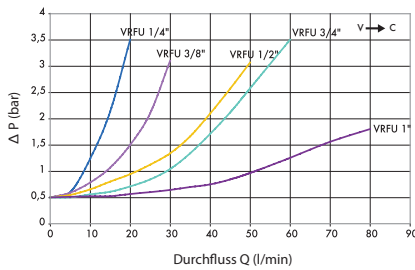
Drossel-Rückschlagventil

Typ VRFU 90° (Leitungseinbau)

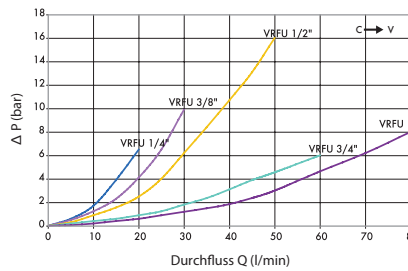


Druckabfall (Öltemperatur: 50 °C/Ölviskosität: 30 cSt)

Geschlossene Drossel



Geöffnete Drossel



Code	Typ	max. Durchfluss (l/min)	max. Arbeitsdruck (bar)	Abreissdruck (bar)	V - C	L (mm)	D (mm)	D1 (mm)	H (mm)	S (mm)	Gewicht (kg)
V0581	VRFU 90° 1/4"	15	350	0.5	G 1/4"	73	M22x1.5	32	82	25	0.416
V0582	VRFU 90° 3/8"	30	350	0.5	G 3/8"	83	M22x1.5	32	82	25	0.42
V0583	VRFU 90° 1/2"	50	350	0.5	G 1/2"	94	M22x1.5	32	87	30	0.582
V0588	VRFU 90° 3/4"	80	280	0.5	G 3/4"	118	M35x1.5	42	108.5	40	1.36
V0576	VRFU 90° 1"	110	250	0.5	G 1"	135	M35x1.5	42	126	40	1.39

