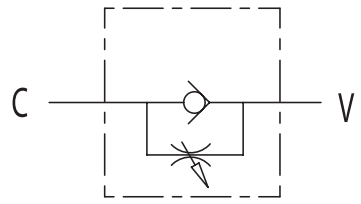
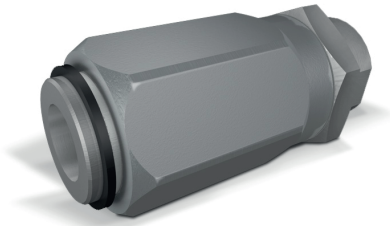


Drossel-Rückschlagventil

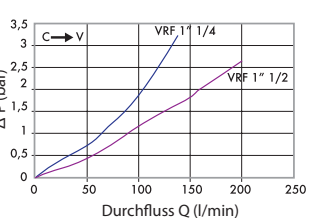
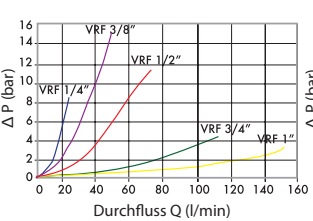
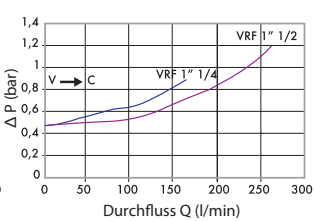
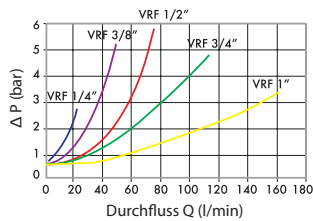
Typ VRF (Leitungseinbau)



Druckabfall (Öltemperatur: 50 °C/Ölviskosität: 30 cSt)

Geschlossene Drossel

Geöffnete Drossel



Code	Typ	max. Durchfluss (l/min)	max. Arbeitsdruck (bar)	Abreissdruck (bar)	V - C	L (mm)	E (mm)	CH (mm)	D (mm)	Gewicht (kg)
V0540	VRF 1/4"	20	300	0.5	G 1/4"	66.5	30	19	34	0.274
V0550	VRF 3/8"	45	300	0.5	G 3/8"	73	32	24	36	0.33
V0560	VRF 1/2"	70	300	0.5	G 1/2"	80	38	27	42	0.484
V0570	VRF 3/4"	110	250	0.5	G 3/4"	95	46	32	51	0.824
V0580	VRF 1"	160	250	0.5	G 1"	109	55	41	60	1.314
V0578	VRF 1 1/4"	210	230	0.5	G 1 1/4"	135	80	55	85	3.31
V0579	VRF 1 1/2"	280	230	0.5	G 1 1/2"	149.5	90	62	95	4.76

