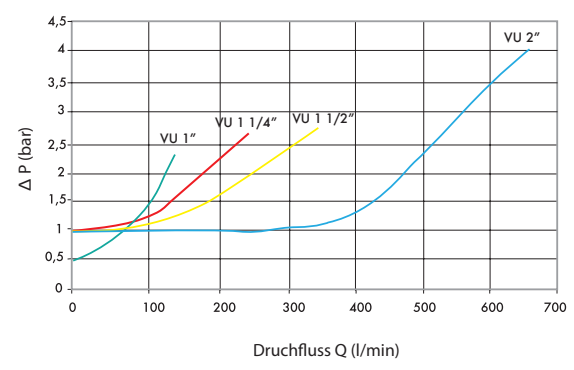
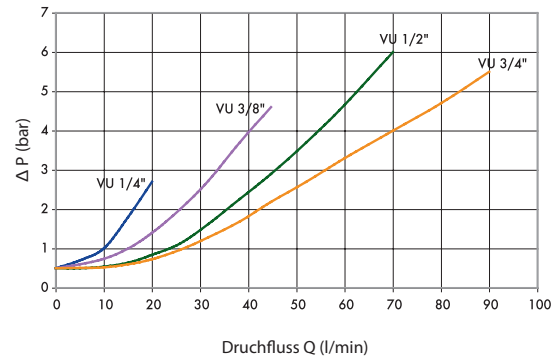
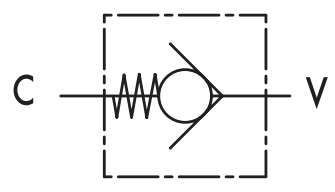
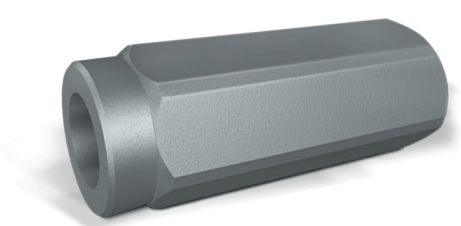


# Rückschlagventil

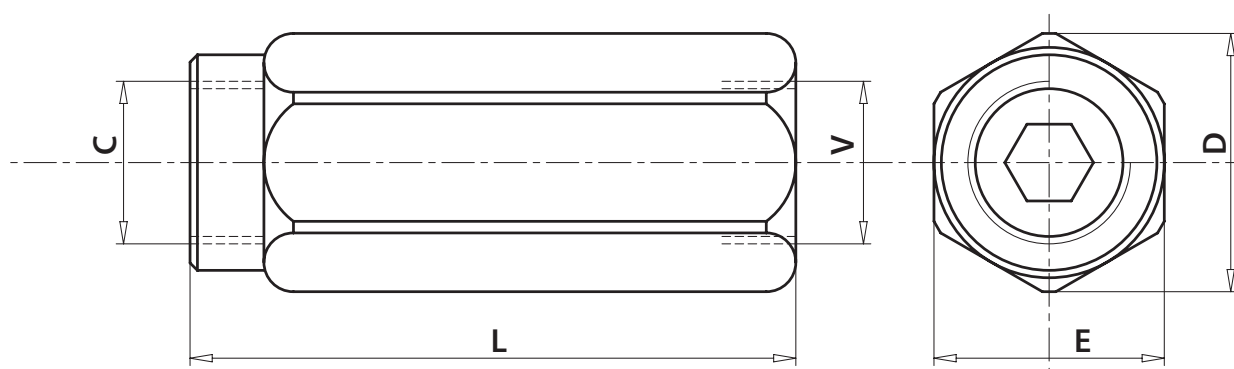
## Typ VU (Leitungseinbau)



### Technische Daten

Code	Typ	max. Durchfluss (l/min)	max. Arbeitsdruck (bar)	Öffnungsdruck (bar)
V0592	VU 1/8"	3	350	±0.4/0.7
V0590	VU 1/4"	20	350	±0.4/0.7
V0600	VU 3/8"	45	350	±0.4/0.7
V0610	VU 1/2"	70	350	±0.4/0.7
V0620	VU 3/4"	110	350	±0.4/0.7
V0630	VU 1"	160	350	±0.4/0.7
V0631	VU 1 1/4"	250	300	±0.7/1
V0632	VU 1 1/2"	350	300	±0.7/1
V0633	VU 2"	650	300	±1

## Masse (mm)



Code	Typ	V – C	L (mm)	E (mm)	D (mm)	Gewicht (kg)
V0592	VU 1/8"	G 1/8"	44	14	16	0.038
V0590	VU 1/4"	G 1/4"	62	19	21	0.104
V0600	VU 3/8"	G 3/8"	68	24	26.5	0.184
V0610	VU 1/2"	G 1/2"	77	30	34	0.322
V0620	VU 3/4"	G 3/4"	88	36	40	0.492
V0630	VU 1"	G 1"	105	41	46	0.676
V0631	VU 1 1/4"	G 1 1/4"	135	55	63	1.646
V0632	VU 1 1/2"	G 1 1/2"	145	60	69	1.95
V0633	VU 2"	G 2"	150	70	80	2.726

## Federn

Typ	0.4/0.7 bar	1 bar	3 bar	5 bar	8 bar
VU 1/4"	V0590	V0590/1	V0590/3	V0590/5	V0590/8
VU 3/8"	V0600	V0600/1	V0600/3	V0600/5	V0600/8
VU 1/2"	V0610	V0610/1	V0610/3	V0610/5	V0610/8
VU 3/4"	V0620	V0620/1	V0620/3	V0620/5	V0620/8
VU 1"	V0630	V0630/1	V0630/3	V0630/5	V0630/8
VU 1 1/4"		V0631	V0631/3	V0631/5	V0631/8
VU 1 1/2"		V0632	V0632/3	V0632/5	V0632/8
VU 2"		V0633	V0633/3	V0633/5	V0633/8