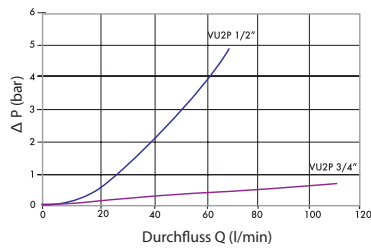
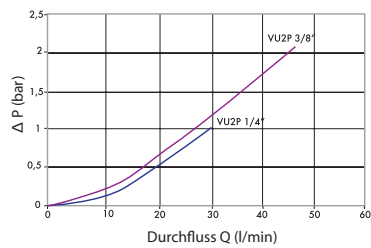
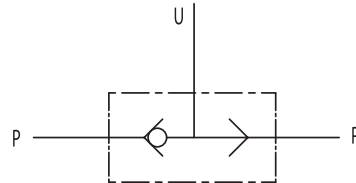
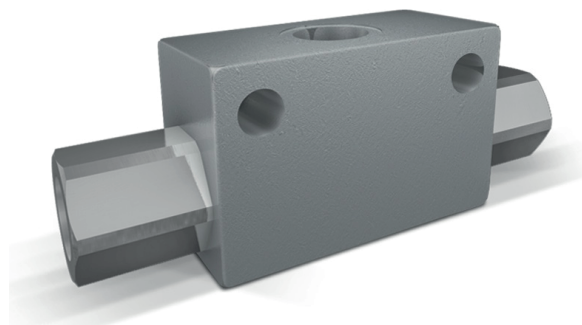
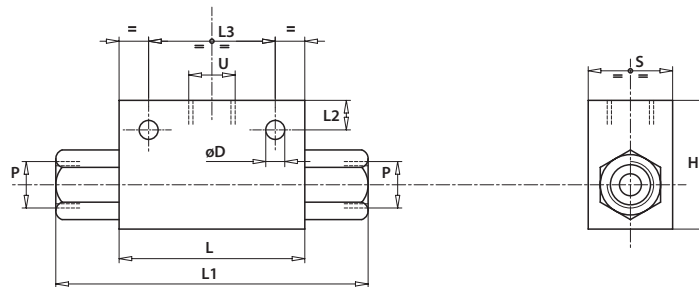


Wechselventil

Typ VU2P (Leitungseinbau)



Code	Typ	max. Durchfluss (l/min)	max. Arbeitsdruck (bar)
V0666	VU2P 1/4"	30	450
V0668	VU2P 3/8"	45	450
V0670	VU2P 1/2"	70	450
V0680	VU2P 3/4"	110	350
V0685	VU2P 1"	150	300



Code	U - P	L (mm)	L1 (mm)	L2 (mm)	L3 (mm)	H (mm)	S (mm)	ØD (mm)	Gewicht (kg)
V0666	G 1/4"	60	104	9	44	40	30	8.5	0.56
V0668	G 3/8"	60	104	9	44	40	30	8.5	0.53
V0670	G 1/2"	60	104	12	44	50	30	8.5	0.652
V0680	G 3/4"	80	127	12	44	58	35	8.5	1.086
V0685	G 1"	80	126	11	60	80	50	10.5	1.87